

PROJECT OVERVIEW

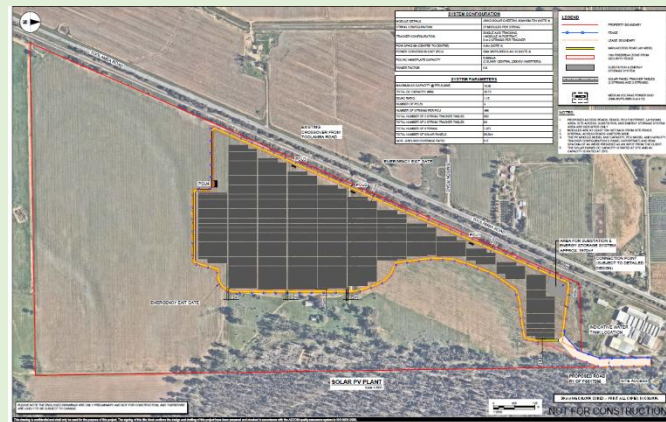
GVCE Mooroopna Solar Farm is a 21MW large-scale solar photovoltaic (PV) plant proposed for the 30-hectare site at 250 Toolamba Rd, Mooroopna, Northern Victoria.

GVCE Mooroopna Solar Farm is an innovative solution, where a community social enterprise (GV Community Energy (GVCE)) has partnered with an international renewable energy company (Akvo Energy) to deliver clean, locally-produced green electricity to the Goulburn Valley.



The proposed development is an innovative solution to transform a parcel of Greater Shepparton City Council owned land into a solar power generation asset for the Goulburn Valley. This solar farm will complement the proposed industrial logistics centre planned for the site west of Toolamba Road.

Estimated to produce over 39,200 MWh of green electricity per year, enough to supply 10,100 average Victorian homes and avoid around 42,340 tonnes of CO₂ emissions annually, GVCE Mooroopna Solar Farm is a pioneering initiative that is creating green energy where power is needed most.



PROJECT ASSETS

- 21MW Solar Farm
- Dedicated project switching station
- Associated infrastructure (e.g. access roads, inverters, etc.)

ENVIRONMENTAL BENEFITS

- Contributing secure and stable green energy into the grid to enhance and support Victoria's energy supply
- Generating enough green electricity (approximately 39,200 megawatt hours) to power around 10,100 average Victorian homes each year
- Generating electricity from the sun to displace 42,340 tonnes of carbon dioxide per year

GRID CONNECTION

Preliminary grid connection studies with Powercor have commenced. The exact grid connection configuration will be determined in the coming months.

PROJECT TEAM

GVCE Mooroopna Solar Farm is a joint venture between local non-profit social enterprise GV Community Energy (GVCE) and international renewable energy company Akvo Energy.

Akvo Energy owns and operates 1.2GW of renewable energy facilities across Europe, North & South America, Africa, the Middle East, South-East Asia and the Australia Pacific region.

The project's planning partners are AECOM, Australian Cultural Heritage Management (ACHM), Advance Survey Design, and Terramatrix.

PROPOSED TIMELINE

Planning & Design

- Q2 2019 – Q2 2020

Contracting & Financing

- Q2 2020 – Q4 2020

Construction

- Q1 2021 – Q3 2021

Operational Start Date

- Q3-4 2021
- 25 Year Operational Life

COMMUNITY BENEFITS

- Creation of jobs during development, construction and operation
- Production of locally sourced green electricity
- Economic boost with a direct investment of approximately \$32 million into the Northern Victorian economy